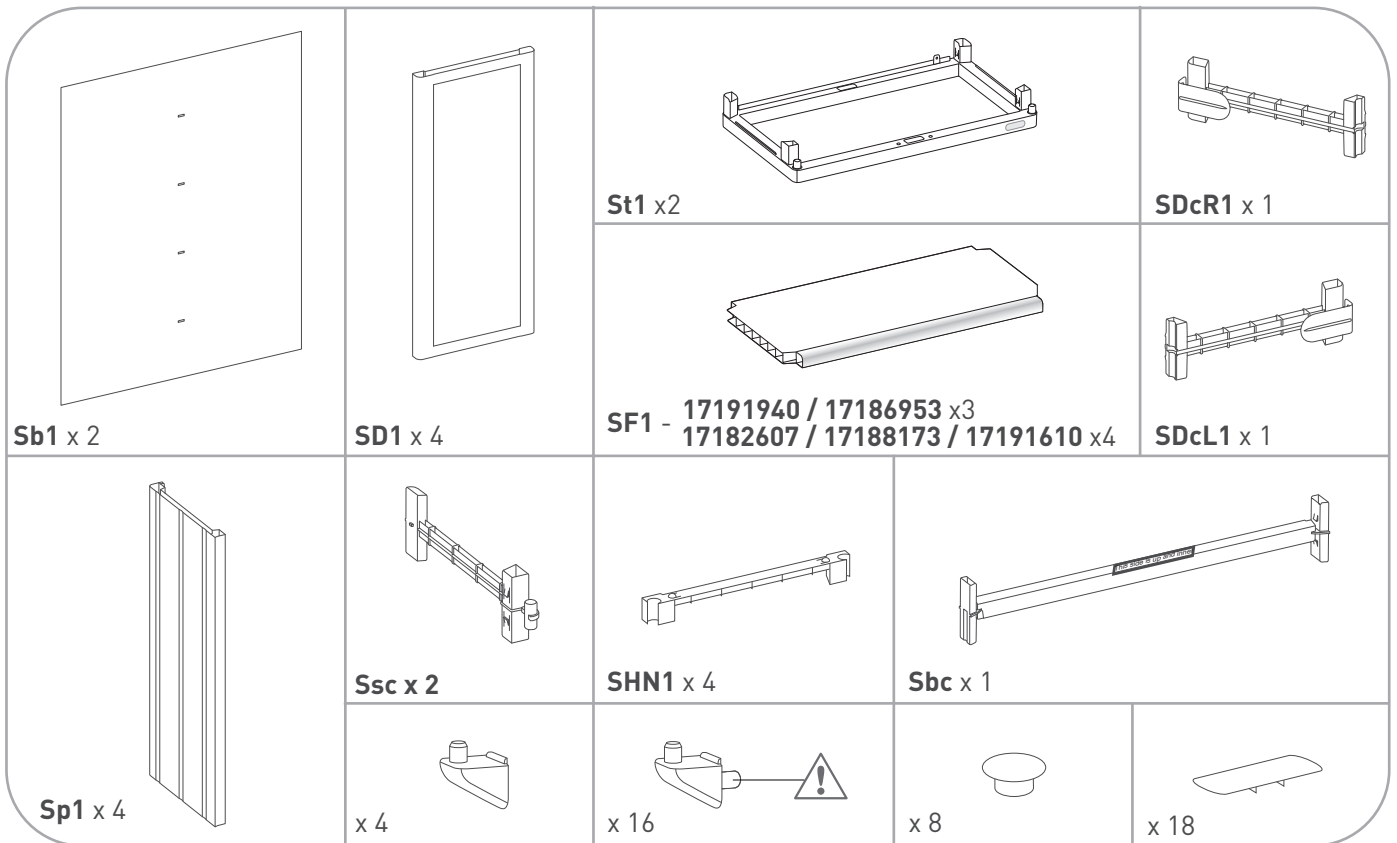


SPACE RITE™

Utility cabinet | Armoire de rangement | Mehrzweckschrank | Armadio multiuso | Armadietto | Werkkast | Armário de serviço | Βοηθητική ντουλάπα

Assembly Instructions | Instructions de Montage | Montageanleitung | Instrucciones de Montaje | Istruzioni di Montaggio | Montagevoorschrift | Instruções De Montagem | Οδηγίες Συναρμολόγησης



IMPORTANT: Please contact Customer Service if you have any problems or discover any missing parts.

IMPORTANT: Veuillez contacter notre Service Clientèle pour tout problème ou pièce manquante.

WICHTIG: Bitte wenden Sie sich an unseren Kundenservice, falls Sie irgendwelche Probleme haben oder feststellen, daß Teile fehlen.

IMPORTANTE: Sírvase contactar con nuestro Servicio al Cliente por cualquier problema, o pieza que pudiera faltar.

IMPORTANTE: Si prega di contattare il Servizio Clienti per eventuali necessità.

BELANGRIJK: Neem t u in geval van problemen of missende onderdelen a.u.b. contact op met de klantenservice.

IMPORTANTE: favor entrar em contato com o Serviço ao Cliente se houver problemas ou se faltar peças.

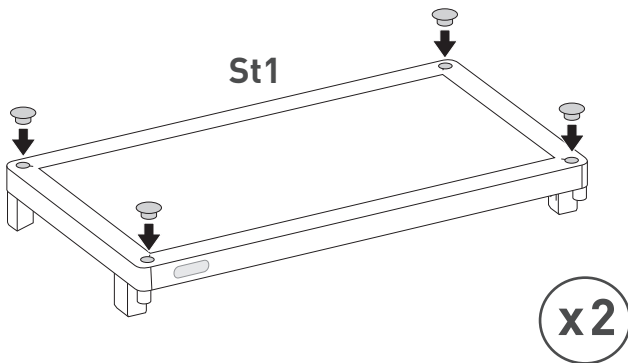
ΣΗΜΑΝΤΙΚΟ: παρακαλώ επικοινωνήστε με την Εξυπηρέτηση Πελατών αν αντιμετωπίσετε κάποιο πρόβλημα ή αν λείπει μέρος από την συσκευασία

USA
Call Toll Free Number: 1-(888)-374-4262
Canada
Appel gratuit / Call Toll Free Number:
1-800-661-6721

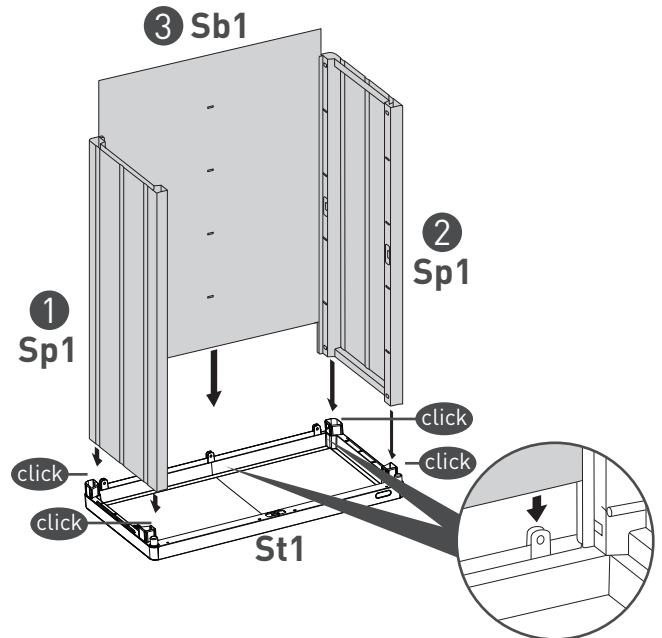
United Kingdom:
Keter (UK) Ltd.
Unit 4, Woodgate Business Park, Clapgate Lane,
Birmingham, B32 - 3DB, United Kingdom.
Tel: 0121-5060008, Fax: 0121-4220808

Other European Countries:
Keter Europe Gardening
Ericssonstraat 17, Postbus 224,
5120 AE Rijen, the Netherlands. Tel: 31-1612-28301, Fax: 31-1612-28322
Italy
PRIMATRONIC S.R.L. Via L. Da Vinci, 281
20090 Trezzano s/N (MI) Italia
Tel. + 39 02 4478086 / + 39 02 4451241, Fax +39 02 4478151

1

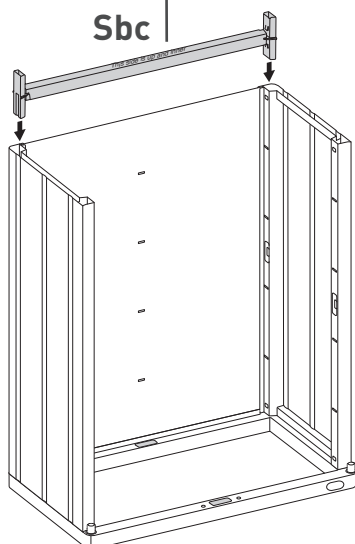


2

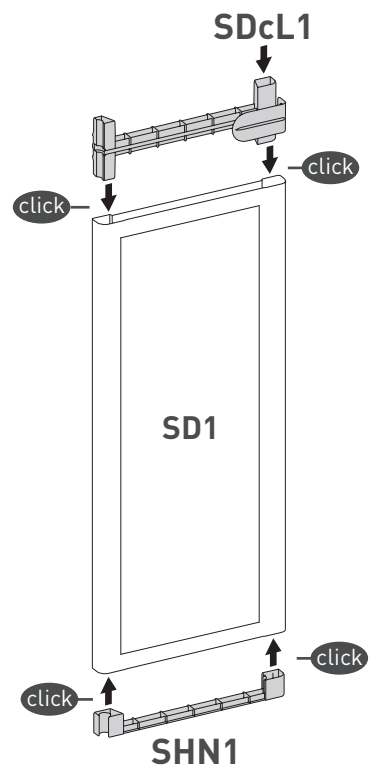


3

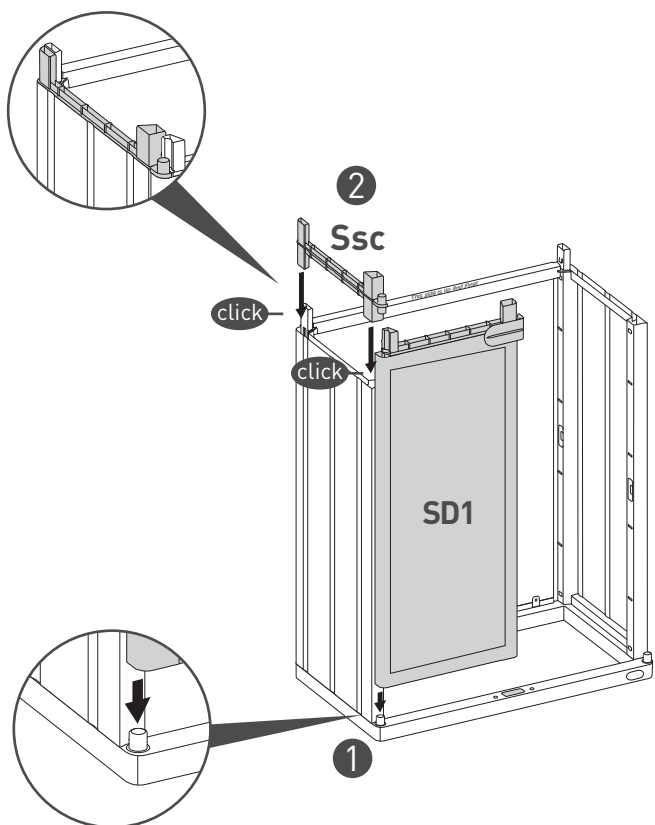
"This side is up and inner"
 Ce cote est interieur et superieur
 Mit dieser Seite nach oben und innen einsetzen
 Este lado hacia arriba y hacia el interior
 Questo lato è in alto ed interno.
 Deze zijde omhoog en aan de binnenkant
 Este lado para cima e para o interior
 Αυτή η πλευρά είναι η επάνω και εσωτερική



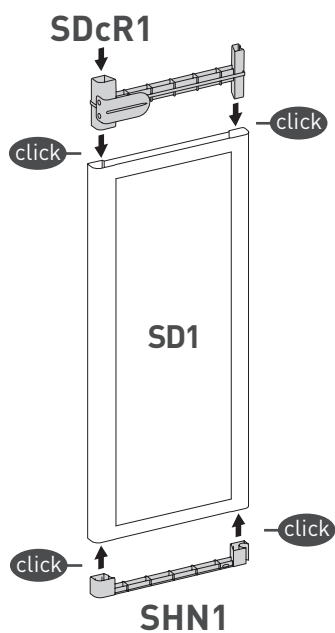
4



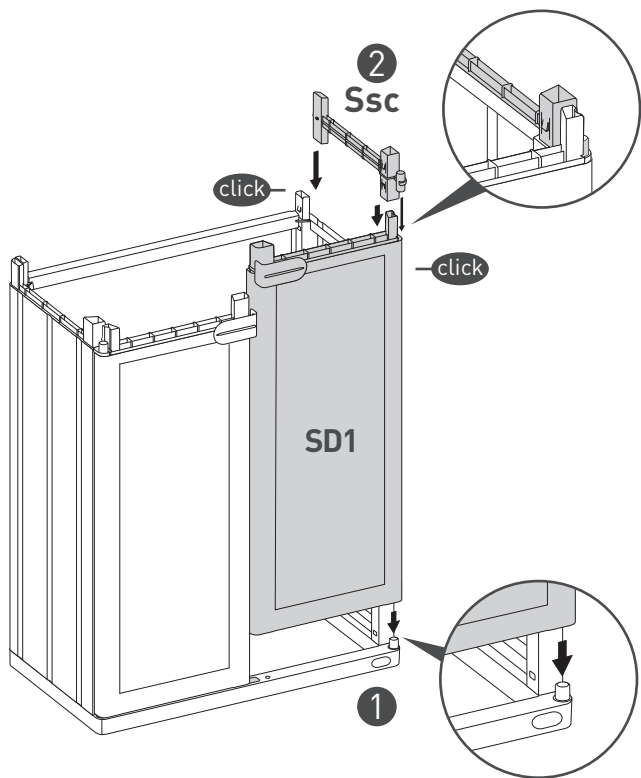
5



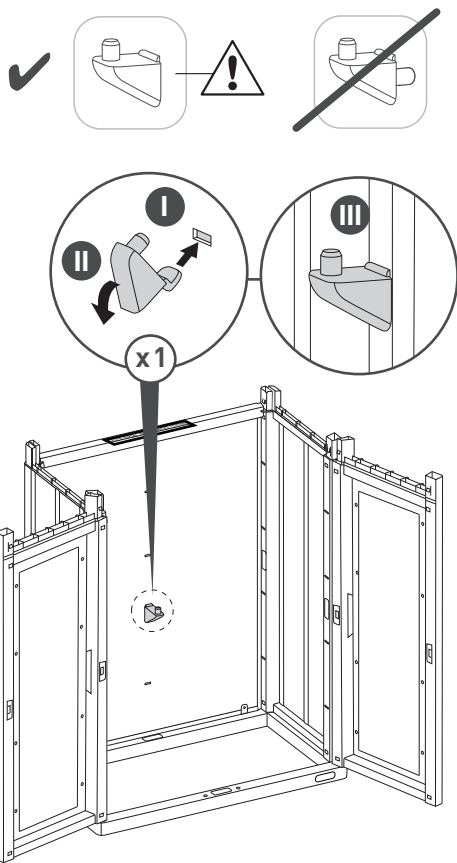
6



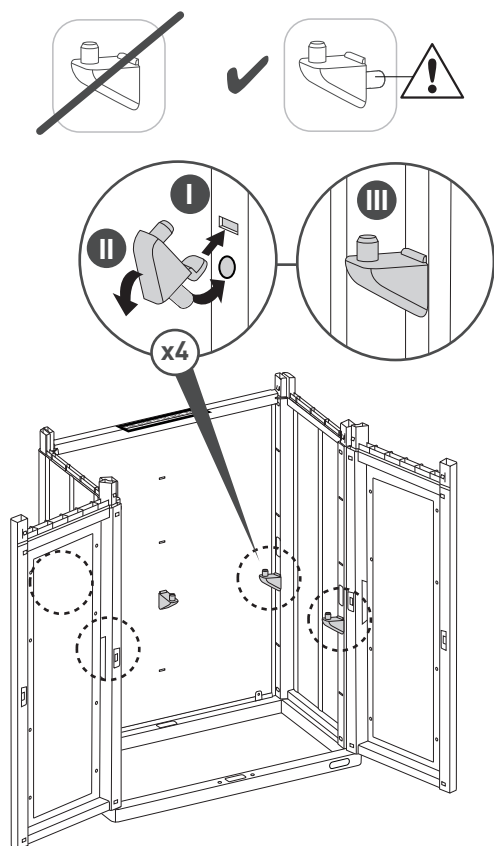
7



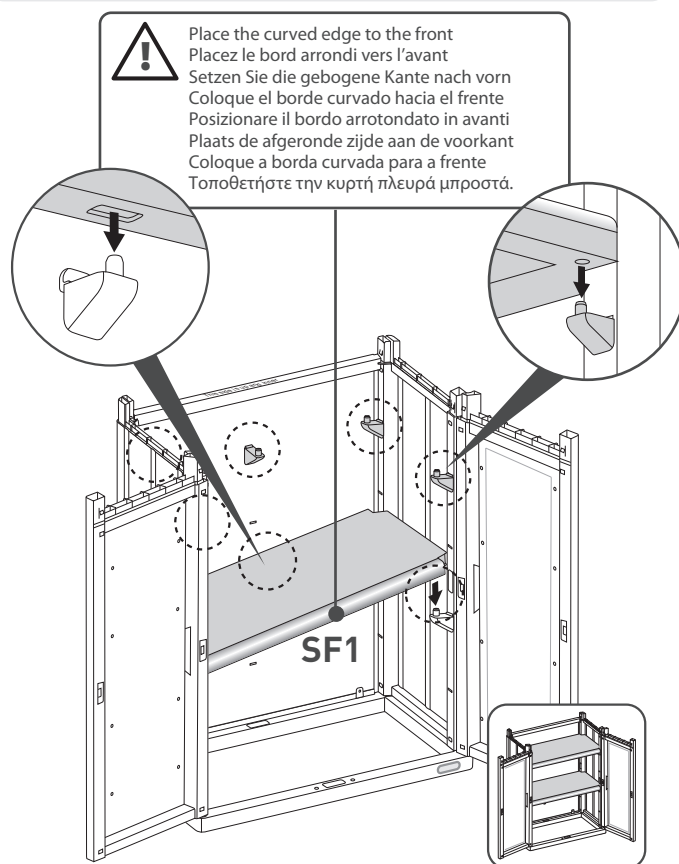
8



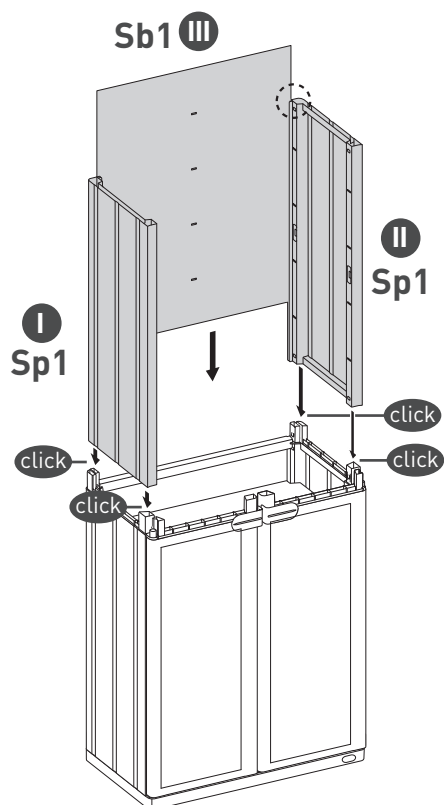
9



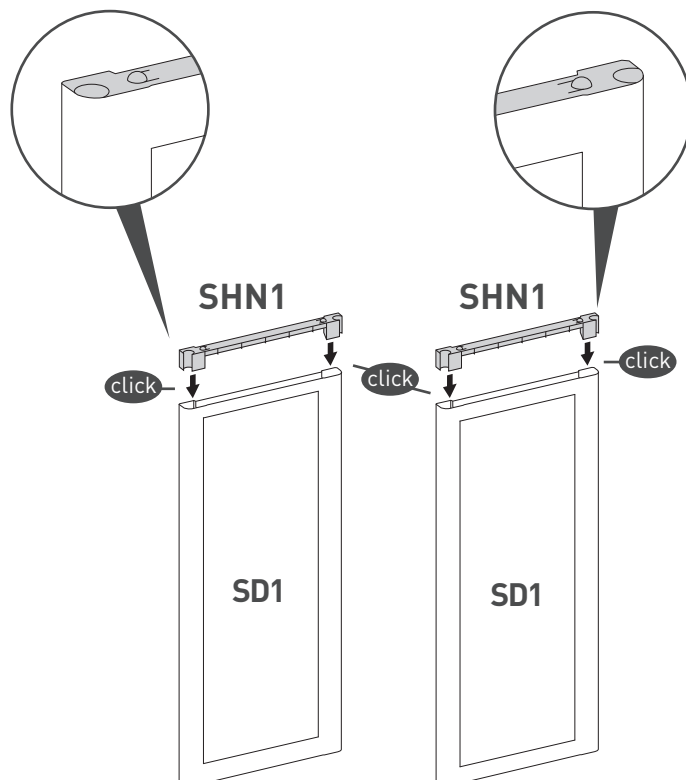
10



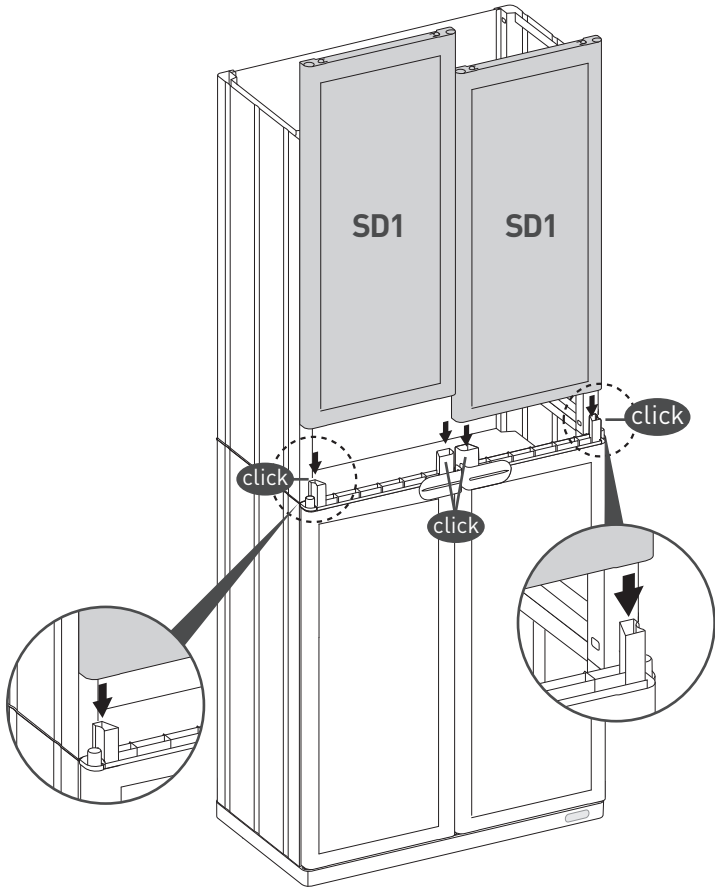
11



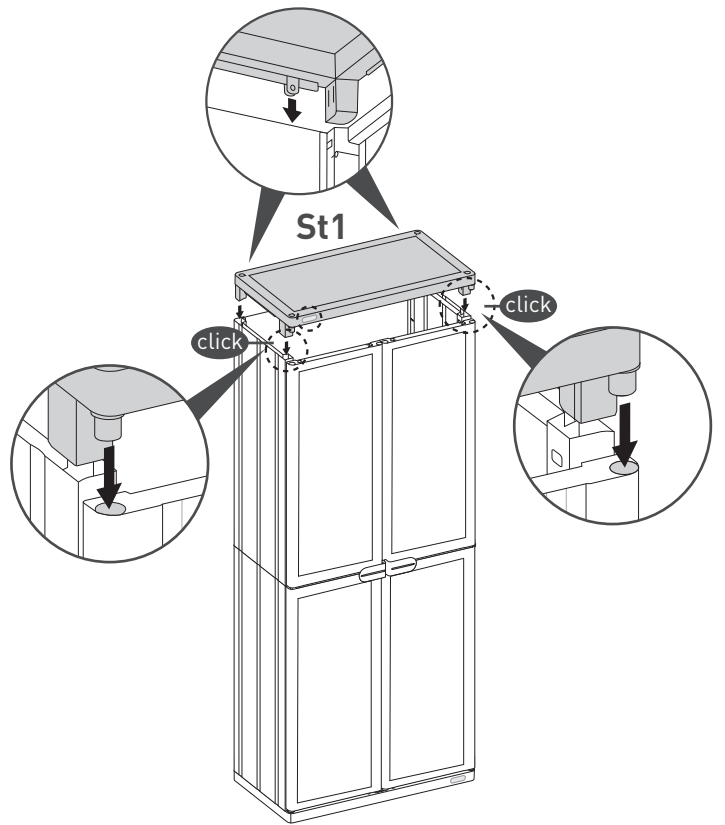
12



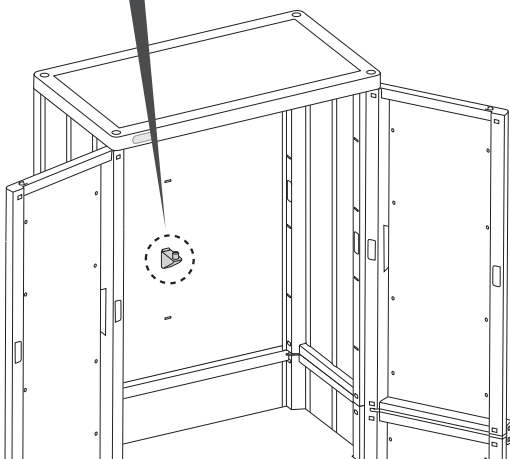
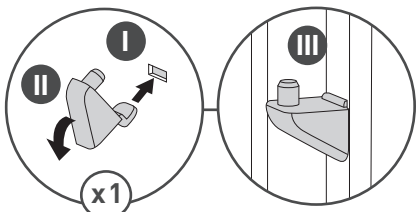
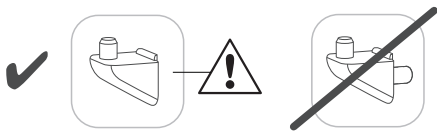
13



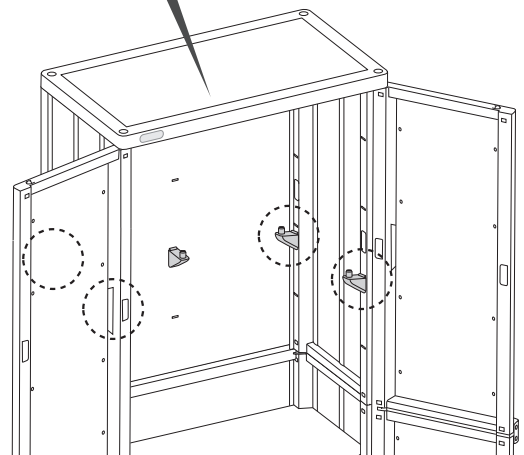
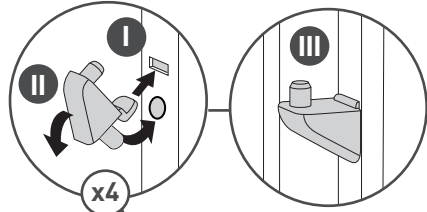
14



15



16

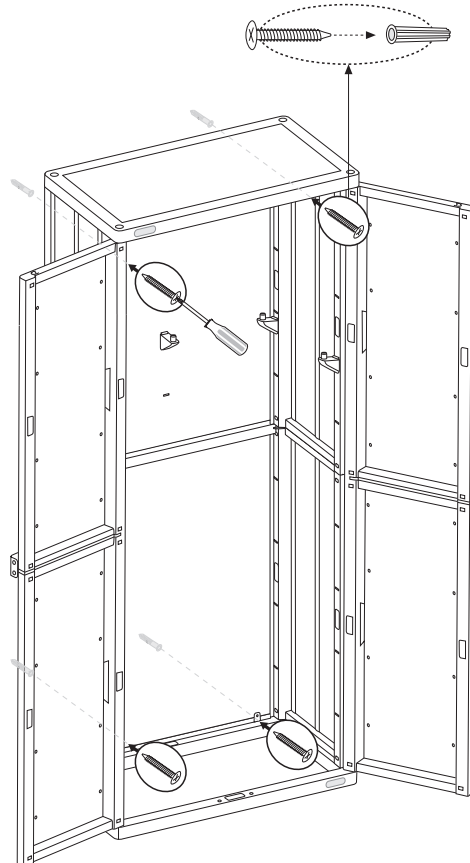
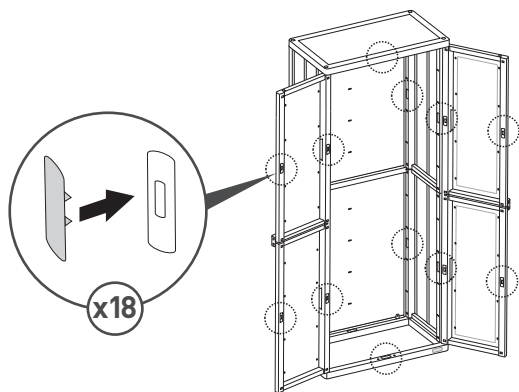


17



Attach to the wall | Fixer au mur | Zur Befestigung an der Wand | Asegurar a la pared | Fissare l'unita' al muro | Te monteren aan de muur | Assegurar à parede | Τοποθετήστε τη στον τοίχο

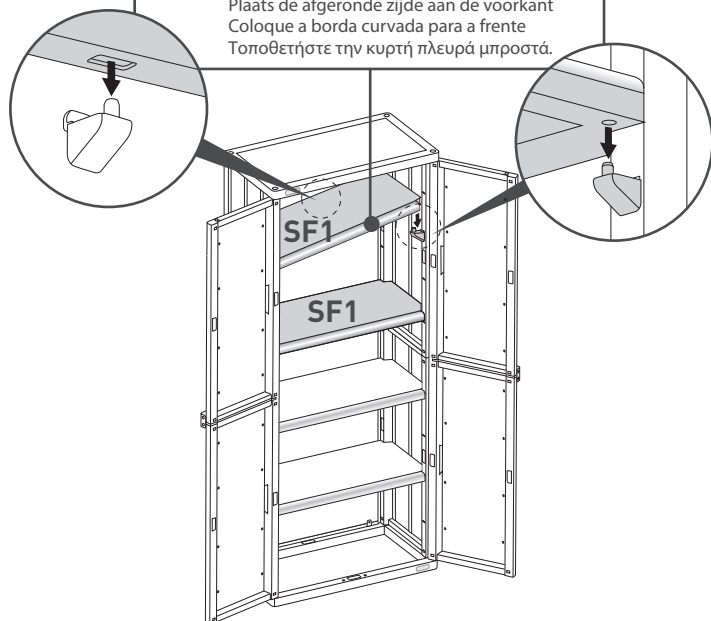
When fixing the unit to a wall, please consult your local retailer on the appropriate screws to use | Lors de la fixation de l'unité au mur, veuillez consulter votre détaillant local sur les vis appropriées à utiliser | Bei der Wandmontage unseres Schrankes achten Sie bitte auf die Wandbeschaffenheit zur Auswahl des richtigen Dübels oder fragen Sie Ihren Fachhändler | Para fijar el armario a una pared, por favor consulte a su minorista local sobre los tornillos apropiados | Nel fissare l'unità a muro, consultare il proprio rivenditore locale a proposito delle viti adatte da utilizzare | Wanneer u de kast aan de muur wilt bevestigen raadpleeg uw verkoper welke bevestigingsmaterialen u kunt gebruiken | Fixar o armário a uma parede, por favor consulte com o varejista local deles nos parafusos apropriados | Για την τοποθέτηση της μονάδας στον τοίχο, παρακαλώ συμβουλευτείτε το κατάστημα αγοράς σχετικά με τις κατάλληλες βίδες για χρήση



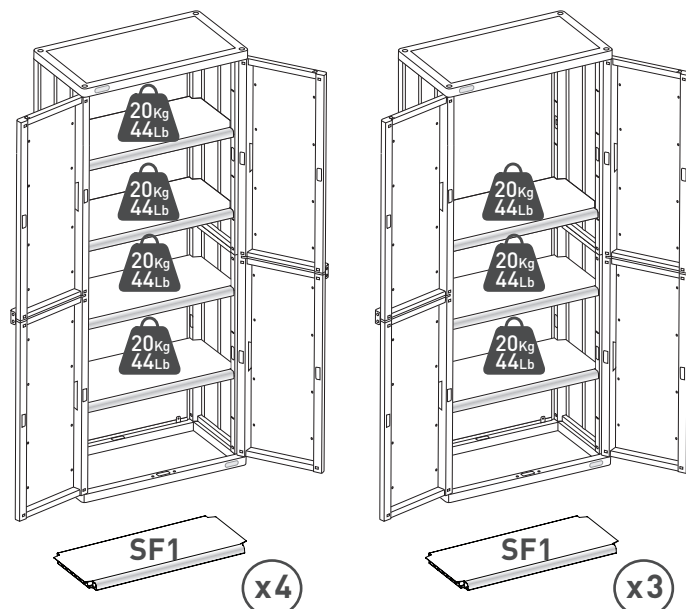
18



Place the curved edge to the front
Placez le bord arrondi vers l'avant
Setzen Sie die gebogene Kante nach vorn
Coloque el borde curvado hacia el frente
Posizionare il bordo arrotondato in avanti
Plaats de afgeronde zijde aan de voorkant
Coloque a borda curvada para a frente
Τοποθετήστε την κυρτή πλευρά μπροστά.



19



17182607 / 17188173 / 17191610

17191940 / 17186953

After assembly is completed there may be extra small parts, you may dispose of these as they are not needed | Une fois l'assemblage terminé, il se peut que vous ayez quelques petites pièces en trop dont vous pouvez vous débarrasser car elles ne sont pas nécessaires | Sollten nach dem Zusammenbau kleinere Plastikteile übrig geblieben sein, so können Sie diese entsorgen | Finalizado el montaje, pueden sobrar algunas piezas, puede disponer de ellas pues no son necesarias | A montaggio ultimato possono avanzare alcune piccole parti, queste possono essere smaltite perchè non sono necessarie | Voor de zekerheid zijn extra kleine onderdelen toegevoegd, de onderdelen die teveel zijn ontvangen mag u weggooien bij uw huisafval | Concluído a assembléia, eles podem ter alguns pedaços mais que suficiente, pode os ter porque eles não são necessários | Όταν η συναρμολόγηση έχει ολοκληρωθεί μπορεί να υπάρχουν επιπλέον μικρά κομμάτια που δεν χρειάζονται, μπορείτε να τα διαθέσετε στα άχρηστα |